

Career Education Center

Report of Cooperative Education Program



2009-10

Contents

- 2009-10 Co-op Reports
- Supervisor Evaluations
- Student Self-Assessment
- Co-op Employer of the Year
- Co-op Student of the Year

Mission Statement

The Career Education Center's mission is to offer relevant and timely career development training to UDM students. The Center provides opportunities for students to explore career options, obtain career-related experience and to research and find meaningful employment appropriate to their knowledge, abilities, aspirations and interests.

We accomplish our mission by providing students with...

- Experiential learning opportunities through cooperative education and internships
- Opportunities to network with recruiters' through campus interviewing, career fairs, employer information sessions and on-line career management software.
- Opportunities to learn and implement lifelong career development and career management skills through courses, workshops, seminars and online career resources.

Our Core Values

- We are committed to empowering students to make purposeful career-related decisions.
- We are committed to building and fostering partnerships with employers, faculty, staff and administration to facilitate the accomplishment of the CEC mission.
- We are committed to supporting the University mission to provide excellent student-centered education in a welcoming and supportive environment.

Career Education Center Staff

Sheryl McGriff, Dean
313-993-1017
careerlink@udmercy.edu

Elissa Clemons, Assistant Dean
Graduate & Alternative Co-op, Co-op Portfolio,
Alumni Career Services, Co-op Coordinator
Aquinas students and 5yr Biology/PA
313-993-1449
elissa.clemons@udmercy.edu

Carol Jones, Office Assistant
313-993-1017
carol.jones@udmercy.edu

Denise McCormick, Co-op Coordinator
College of Health Professions/McAuley School of
Nursing Career Services—Last Name L-Z
313-993-1448
denise.mccormick@udmercy.edu

Carmen D. Gamlin, Co-op Coordinator
College of Engineering and Science and School of
Architecture Career Services
313-993-1164
carmen.gamlin@udmercy.edu

Tracey Knowles, Career Services Coordinator
College of Liberal Arts and Education and College
of Business Administration Career Services
313-993-1444
tracey.knowles@udmercy.edu

Shawn R. Turner-Pewitt, Co-op Coordinator
College of Health Professions/McAuley School of
Nursing-Last name A-K
313-993-1690
shawn.turner-pewitt@udmercy.edu

Cooperative Education

Cooperative Education

Cooperative Education contributes to the development of a career plan by giving students first-hand work experience that integrates classroom study with planned and supervised experience in the workforce. The Cooperative Education Preparation course: CEC 300 focuses on preparing the student for their cooperative education program and is a requirement to participate in co-op education.

Cooperative education is a required part of the curriculum for engineering, nursing and biology/5-yr physician assistant students and is offered as an optional program for other majors. Students in optional programs who wish to participate in cooperative education should consult with their college for minimum GPA and course

Co-op is a *Paid* learning experience.

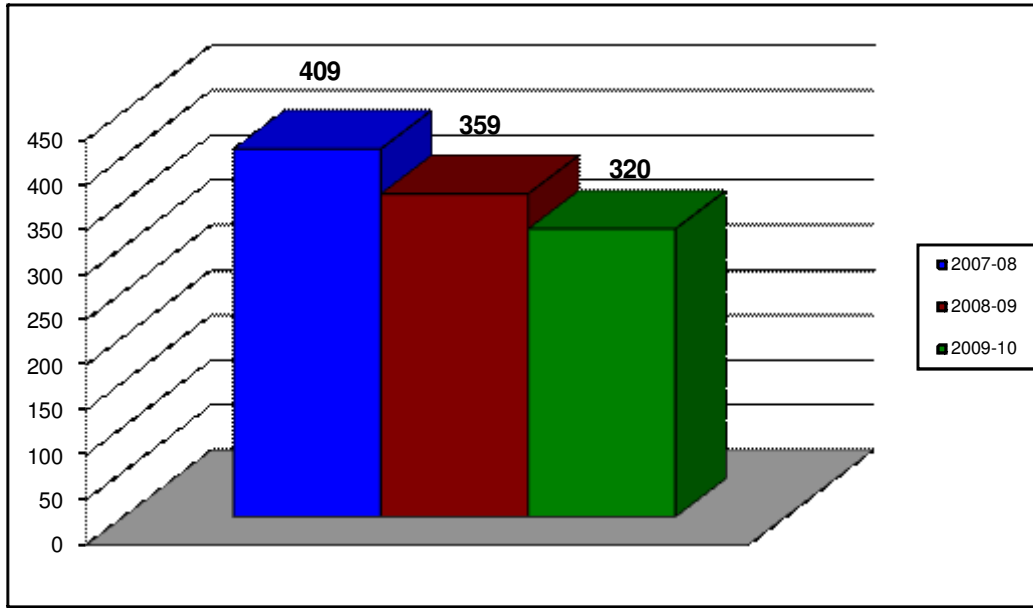
Nursing majors are required to complete two (2) assignments -one (1) part-time (1st assignment) and one (1) full-time (2nd assignment) generally with the same employer. Biology/5-yr Physician Assistant majors are required to complete one (1) full-time assignment.

Co-op Assignments

Co-op is strongly encouraged at UDM. The number of students on co-op assignment in 2009-10 decreased by 12% for 2008-09 and by 28% for 2007-08. The 2009-10 enrollment in the Preparation for Co-op (CEC 3000) course increased 13% for 2008-09 and increased 10% over 2007-08. Additionally, 12 students earned co-op credit by portfolio in 2009-10.

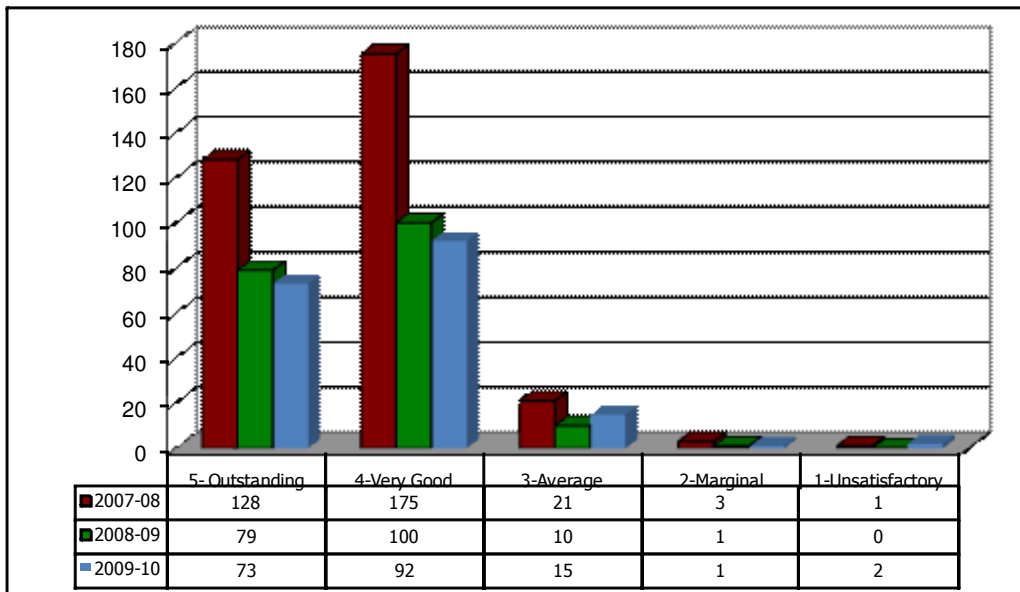
CEC 3000/3020 Section/Enrollment Comparison								
CEC 3000/3020	# of Sections 07-08	# Enrolled 07-08	# of Sections 08-09	# Enrolled 08-09	# of sections 09-10	# Enrolled 09-10	% difference from 08-09	% difference from 07-08
Totals	9	271	9	258	9	295	13%	8%

Three Year Co-op Assignment Comparison Undergraduate and Graduate



Overall Evaluation of Student Performance by Co-op Supervisors for Three Years

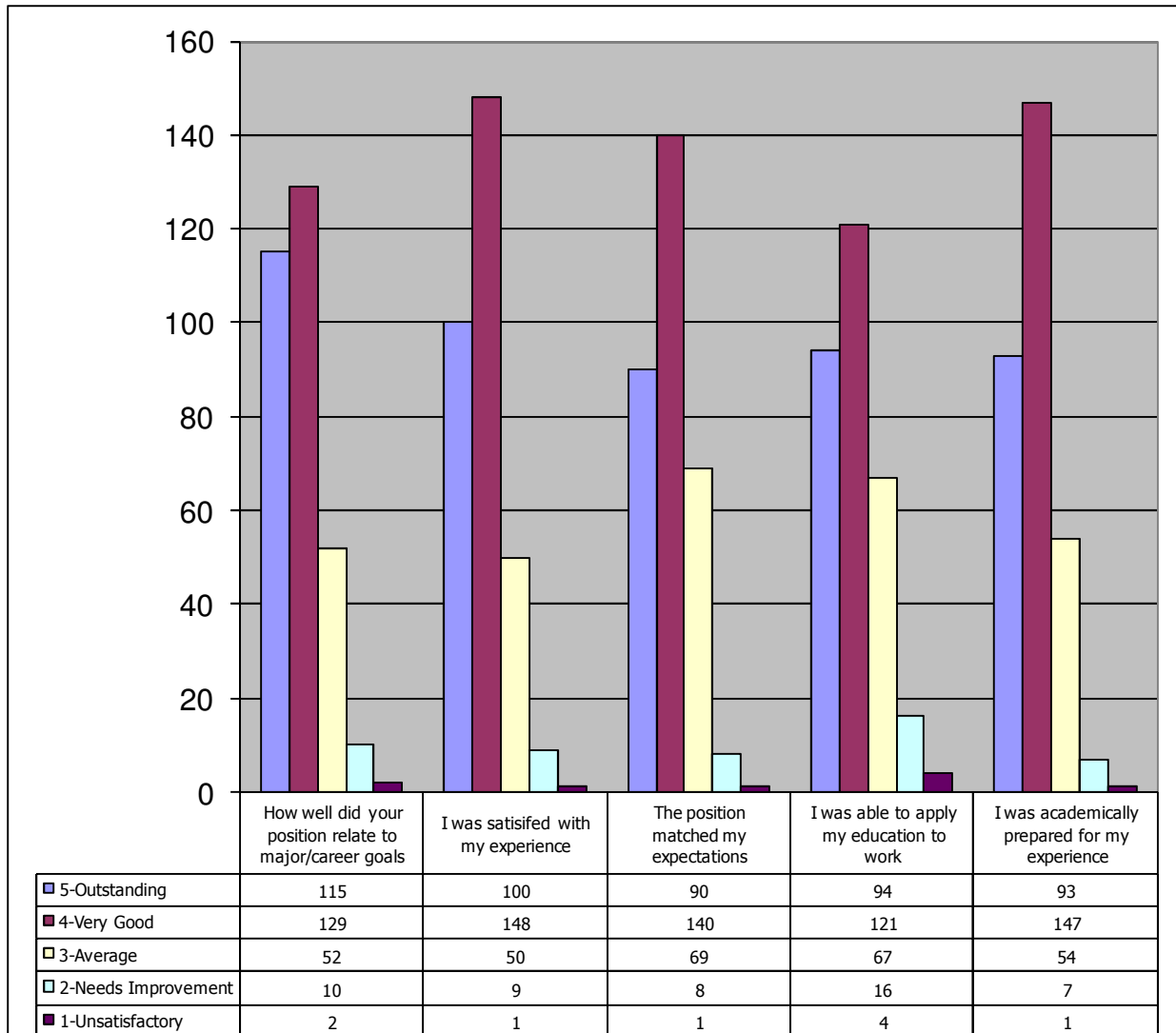
While on the co-op assignment students are evaluated by their supervisor in three areas of performance factors: Professionalism, Academic preparation and Skills. The following charts show how supervisors have rated UDM co-op students for three consecutive years.



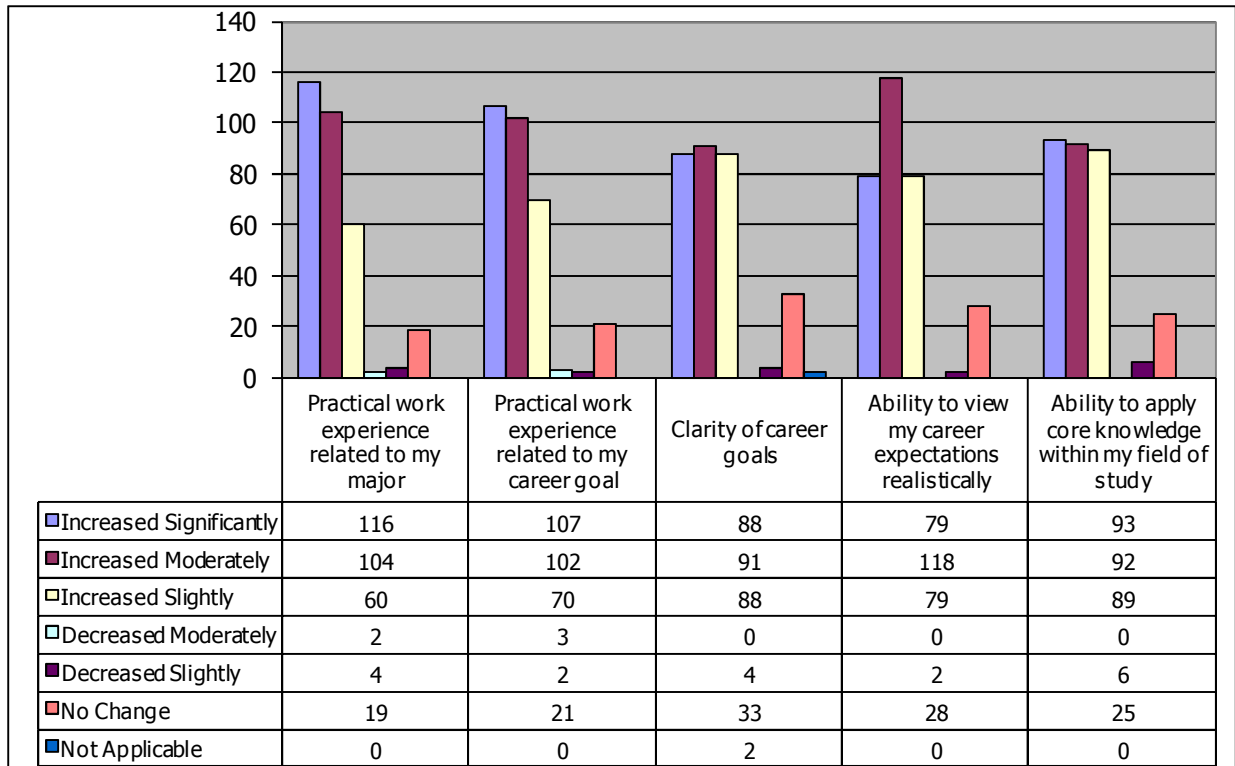
Students Evaluation of Co-op Assignments 2009-10

Students participating in a co-op assignment are required to rate their experience in several categories. These evaluations allow the Career Education Center to determine the effectiveness of the students co-op experience. Students are required to evaluate their increase in professional competencies, the co-op work term and the co-op program.

Program Evaluation of Co-op Assignments



Student Self-Evaluation of Co-op Assignments



Co-op Salaries 2009-10

Salary Data for 2009-10 Co-op Assignments*

Co-op is a *Paid* learning experience. Student's earning typically increase during subsequent co-op rotations. The salary data presented is based on student rotations in 2009-10 academic year, **NOT** on individual student progression in the co-op program.

All Majors - Undergraduate					
Full-time Assignment - Salary for Term I, II and III 2009-10					
Hourly Salaries					
n=173		Median	Minimum	Maximum	Mode
1st Co-op Assignment	TI, II & III	13.70	7.80	17.20	10.00
2nd Co-op Assignment*	TI, II & III	15.25	9.00	22.10	17.00
3rd Co-op Assignment	TI, II & III	15.00	12.00	23.75	15.00

*Nursing students are only included in 1st and 2nd co-op assignment outcomes. Biology/5-year Physician Assistant students are only included in 1st co-op assignment outcomes.

2009-10 Co-op Salaries for REQUIRED Majors

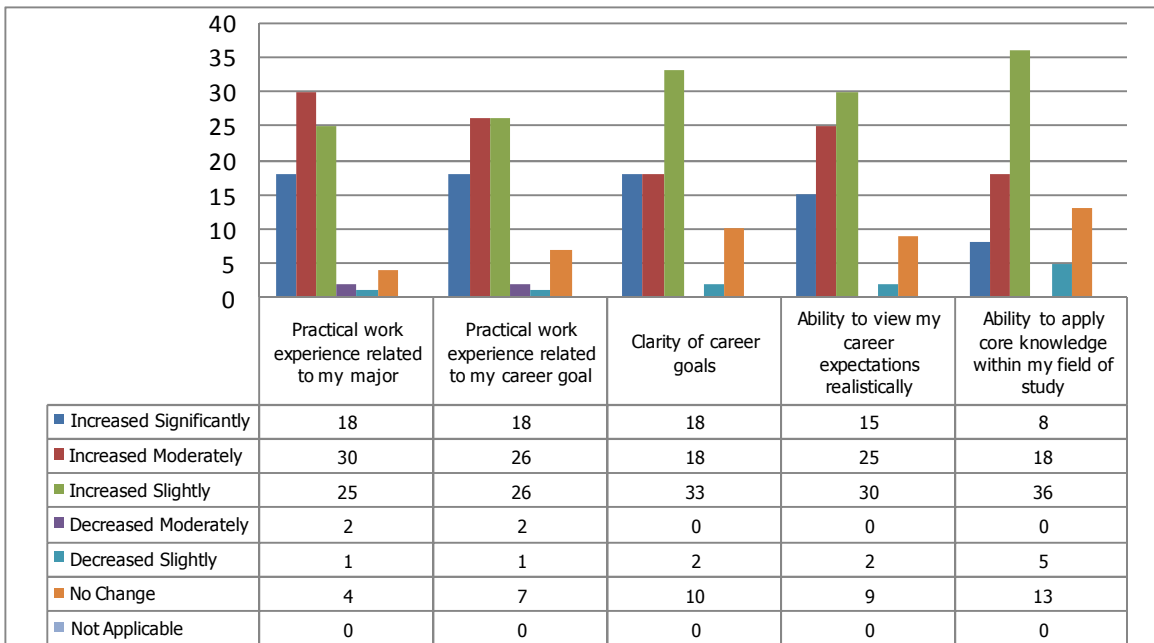
Nursing		Hourly			
n=180		Median	Minimum	Maximum	Mode
1st Co-op Assignment (Part-Time)	TI, II & III	12.08	8.50	17.00	10.37
2nd Co-op Assignment (Full-Time)	TI, II & III	15.11	9.00	17.42	17.00

Engineering		Hourly			
n=66		Median	Minimum	Maximum	Mode
1st Co-op Assignment	TI, II & III	15.00	10.00	17.20	15.50
2nd Co-op Assignment	TI, II & III	15.70	10.00	22.10	16.50
3rd Co-op Assignment	TI, II & III	15.00	12.00	23.75	15.00

Biology/5-yr PA		Hourly - Full-time			
n=11		Median	Minimum	Maximum	Mode
1st Co-op Assignment	TI, II & III	10.00	7.80	11.00	10.00

**Salary data is based on students on rotation in 2009-10 academic year, not on individual student progression in co-op program. Note: n= total respondents to co-op salary data request. Students in the higher salary ranges have prior experience in their chosen field.

Engineering Student's Self-Evaluation of 2009-10 Co-op Assignments for Terms I, II and III



Engineering Co-op Employers 2009-10

Civil Engineering

DTE Energy
 England Logistics
 G2 Consulting Group LLC
 Giffels-Webster Engineers, Inc.
 Hardman Construction
 Michigan Department of Transportation

Municipality of Chatham-Kent
 Navistar, Inc.
 Professional Service Industries, Inc. (PSI)
 Rauhorn Electrical, Inc
 Southeast Michigan Council of Governments
 Superior Engineering Associates, Inc.
 University of Detroit Mercy

Electrical Engineering

ABC Corporation
 Carrier, Blackman & Associates, PC
 Continental Automotive Systems
 Denso International America, Inc.
 DTE Energy
 Ford Motor Company

National Security Agency
 P3 North America, Inc.
 Plastipak Packaging
 TARDEC
 Tech Enterprises
 University of Detroit Mercy
 USKH, Inc.

Mechanical Engineering

American Axle & Manufacturing
 Chrysler Group, LLC
 Cinetic Automation
 DiClemente Siegel Design, Inc.
 DTE Energy
 Faurecia Interior Systems
 Ford Motor Company
 General Motors Corporation
 Kolene Corporation

Lockheed Martin Systems
 Magna International, Inc.
 PCR Contractors
 Peter Basso Associates, INC.
 Preece Incorporated
 SHW Group LLP
 TARDEC
 The Walsh Group
 Transportation Equipment Supply Company (TESCO)
 University of Detroit Mercy

Representative Student Feedback of Overall Career Development - Engineering

1st Co-op

- This co-op has shown me that my career can take me anywhere that I want to be. It could be a field job or working in an office, anything is possible. **(Civil Engineering)**
- My co-op gave me a look into the real world of work, and how it is important to get an education and a good job. I now have a good idea of what I want to accomplish. **(Electrical Engineering)**
- I enjoyed this experience because I got to learn hands on what the working world was like. Also you learn many "tricks of the trade" while working, that you can't learn in a classroom. **(Mechanical Engineering)**

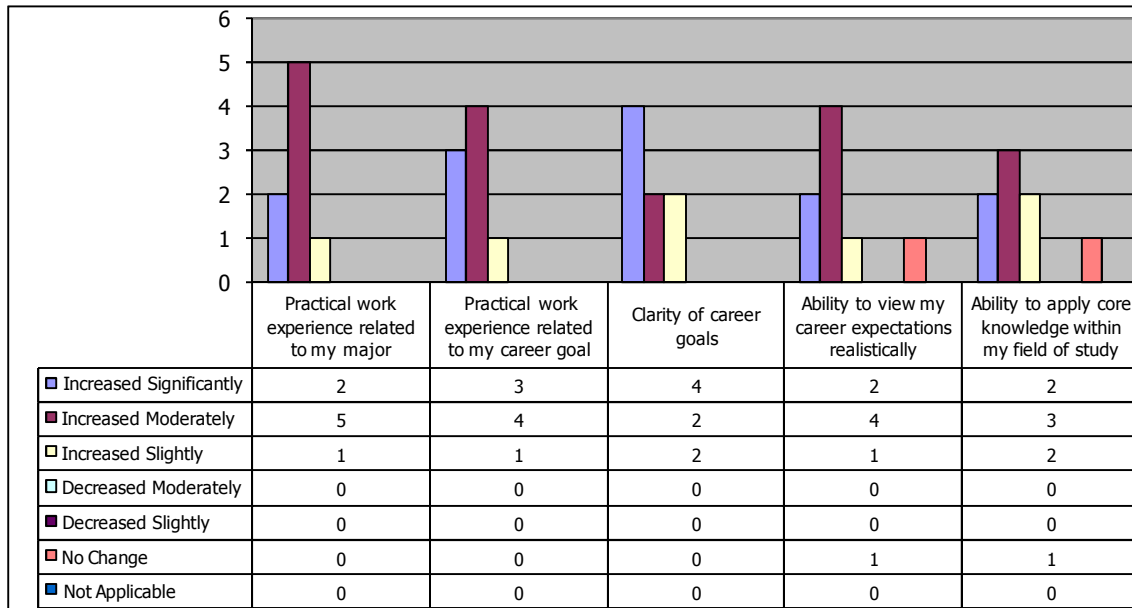
2nd Co-op

- Overall I don't feel like a co-op student, I feel more like a young professional. This is because I have been given more responsibility this summer, and feeling comfortable returning to people that I am familiar with. **(Civil Engineering)**
- I think this semester finally made me aware of the need to develop management and leadership skills, as well as technical skills. **(Electrical Engineering)**
- The knowledge gained of manufacturing processes, and capabilities of these processes, has taught me what I can do for society. **(Mechanical Engineering)**

3rd Co-op

- The type of work I have been doing has been very specific to my desired career. I have been given much more direction and feel very able to accomplish my work, on my own, with confidence. **(Civil Engineering)**
- It was good experience to be out in the field every day, and see what it's like to have to handle projects on my own. **(Civil Engineering)**
- I now know the steps it takes to kick off a project and follow through until the product goes into mass production. **(Electrical Engineering)**
- The calculations I ran really helped tie in my education to my career. This helped me see what I will actually be doing day to day as an engineer. **(Mechanical Engineering)**

Biology/5-yr Physician Assistant Student's Self-Evaluation of 2009-10 Co-op Assignments for Terms I, II and III



Representative Student Feedback of Overall Career Development - Biology/5-yr Physician Assistant

1st Co-op—Biology/5-Yr PA students complete one co-op

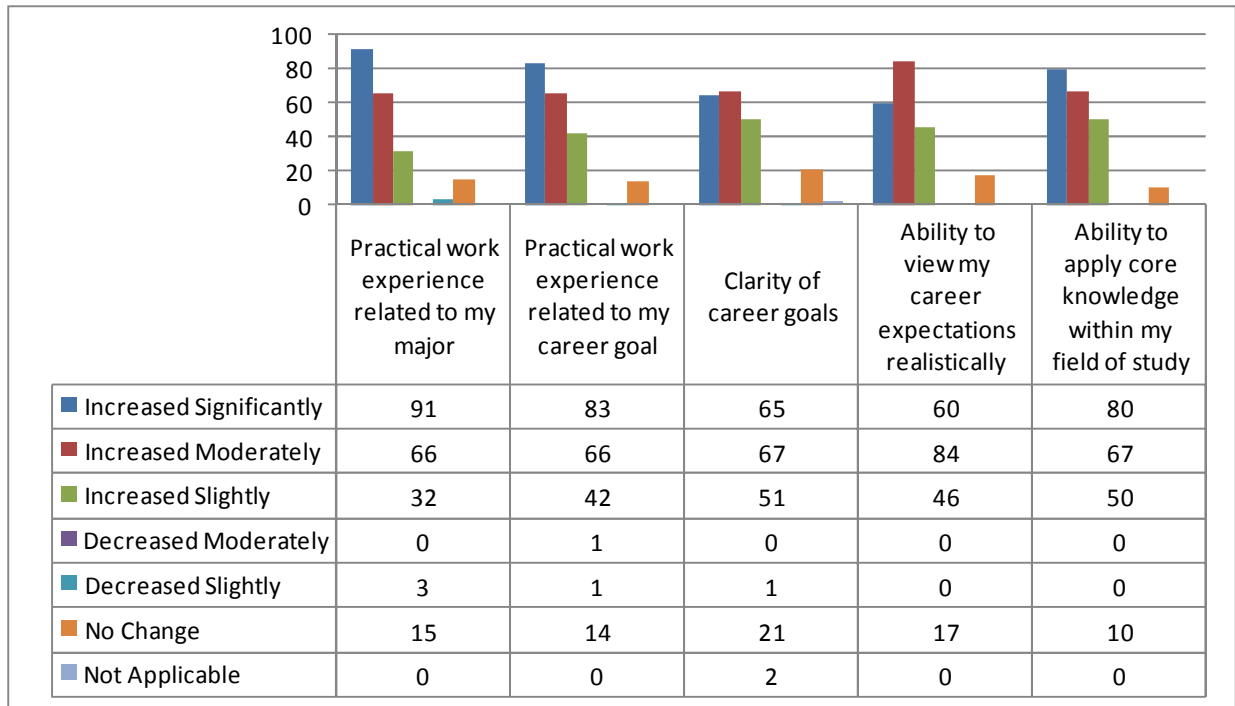
- Not only did I obtain a great insight on my future career as a Physician Assistant, but this was especially true working in an office rather than a hospital. I've learned that now more than ever I want to become a Physician Assistant.
- This experience and insight into the profession, especially in the area of geriatrics, will help immensely as I grow and develop even further in my career path. While it is not the exact niche I would like to eventually pursue, the experience in terms of health-care in general (including the not-so-glamorous parts) has been quite beneficial.
- I have learned from nurses, doctors, and other staff members about their jobs and how it affects the whole system.

Biology/5-year Physician Assistant Co-op Employers 2009-10

Active Body Physical Therapy
 Beaumont Medical Transportation, Inc.
 Beechwood Manor Inc.
 Brookdale Senior Living
 Child and Adolescent Center PC
 Karmanos Cancer Institute

McAuley Center
 Southgate Surgery Center
 Sunrise Senior Living
 Waltonwood Services LLC
 Windemere Park Senior Community

Nursing Student's Self-Evaluation of 2009-10 Co-op Assignments for Term III



Nursing Co-op Employers 2009-10

All Heart Home Care
 Autumn Ravines Assisted and Supervised Living
 Baruch Senior Ministries
 Beechwood Manor Inc.
 Bishop Hills Elder Care Community
 Bloomington Hospital
 Blue Lake Fine Arts Camp
 Botsford Hospital
 Bronson Methodist Hospital
 Children's Hospital of Michigan
 Ciena Healthcare Facilities
 Comfort Care Home Care Assistance
 Covenant Healthcare
 Crittenton Hospital Medical Center
 Detroit Medical Center
 Detroit Receiving Hospital
 DMC Surgery Hospital
 Doctors' Hospital of Michigan
 Erickson Retirement Communities
 Family Health Partners PC
 Garden City Hospital
 Harper University Hospital

Heather Hills Retirement Village & Care Center
 Henry Ford Health System
 Home Instead Senior Care
 Homestead Health Care Services
 Indian Trails Camp
 Karmanos Cancer Institute
 Lapeer Regional Medical Center
 Leisure Living Management
 Little Company of Mary Hospital and Health Care Center
 Lutheran Social Services of Michigan
 Marywood Health Center (GR Dominicans Healthcare)
 McAuley Health Center
 McLaren Regional Medical Center
 Memorial Medical Center
 Mercy Memorial Hospital System
 Michigan Institute of Neurological Disorders
 Mount Clemens Regional Medical Center
 Northern Michigan Regional Hospital
 Oak Crest Health Care Services, Inc.
 Oakwood Healthcare, Inc.

Port Huron Hospital
 Providence Hospital and Medical Centers
 Providence Life Services
 Rabih Nour, M.D.
 Rainbow Rehabilitation Center
 Rehabilitation Institute of Michigan
 Robbinswood Assisted Living Community
 Select Specialty Hospitals
 Shelby Nursing Center
 Sinai-Grace Hospital
 Spectrum Health
 St. John Health (Warren)
 St. John Hospital-Detroit
 St. John Macomb Hospital
 St. Joseph's Mercy Hospital
 St. Mary Mercy Hospital-Livonia
 St. Mary's Health Care-Grand Rapids
 Texas Scottish Rite Hospital for Children
 Tripler Army Medical Center
 University of Detroit Mercy
 University of Michigan Health System
 William Beaumont Hospitals
 Windemere Park Senior Community

Representative Student Feedback of Overall Career Development - Nursing

1st Co-op

- I feel that my co-op work term has opened my eyes to the reality of the nursing field. I have learned much about time management, and balancing a multitude of tasks and responsibilities, while still providing the utmost in quality care.
- Working in a long term care facility with residents with Alzheimer's and dementia has given me the experience that most hospitals look for when hiring for employment. I have accomplished many of my goals throughout the co-op such as working independently, setting priorities between residents, time management, as well as being an active listener to the residents.
- I have gained so much self-confidence and realized that I do know more than I think I know. I have seen all of my book knowledge turn into practical knowledge and that has encouraged me so much. I have been complimented on numerous occasions from patients and nurses alike and told how valuable I am to the unit I work on. This has refreshed my passion and desire to keep pushing forward towards graduation, and keep my eyes on the prize.

2nd Co-op

- This co-op work term has benefited my overall career development by giving me the ability to set priorities: working in triage (knowing which patients need more urgent treatment), as well as the ability to take initiative and show leadership skills when I notice something that needs to be accomplished, and how to complete it most effectively.
- Since I was assigned to a RN preceptor each day, I really got to see how the nurses manage their time, perform their nursing tasks, relate to their patients, and effectively provide great healthcare. I feel more confident now, too, because I had the opportunity to look up different patient's medications or diseases, to correlate their lab values to their specific disease, to follow my patients through surgery to recovery, and apply what I have learned in the classroom in the clinical setting.
- I am more confident than ever that I chose the correct career path for myself. There is no doubt in my mind that nursing is the right fit for me. I enjoy my work and the interactions I have with both patients and co-workers.

2009-10 Co-op Employers of the Year

Co-op Employers of the Year demonstrate their support by their ongoing commitment to recruit and hire University of Detroit Mercy students for paid, cooperative education experiences; and their participation in career related events.

Business Ford Motor Company, Dearborn, Michigan

Engineering DTE Energy, Detroit, Michigan

Nursing Detroit Medical Center, Detroit, Michigan

2009-10 Co-op Students of the Year

Co-op Students of the Year completed at least two cooperative education assignments with an overall rating of **Outstanding** from their supervisors and demonstrated mastery of the workplace competencies necessary for professional development.

Architecture Sean Ryan

Engineering Sergei Gage

Nursing Michael Washinifsky

Career Education Center
University of Detroit Mercy
4001 W. McNichols Road
Reno Hall—1st Floor
Detroit, Michigan 48221
(313)993-1017—General Office
(313)993-1029—Fax
careerlink@udmercy.edu
www.udmercy.edu/cecc