

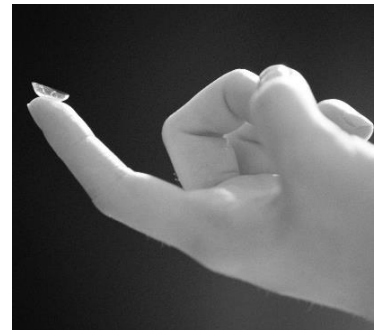
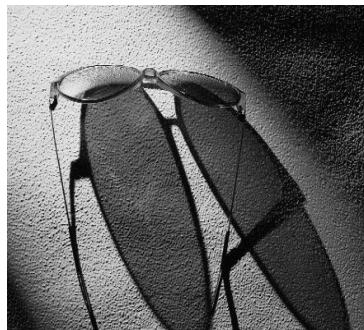
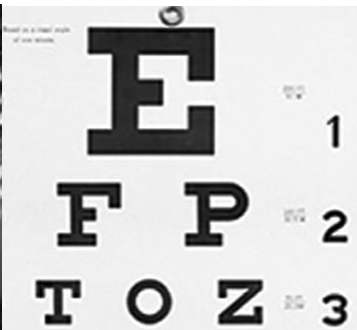
# Heritage vision plans

Vision Benefit Plan | Certificate of Coverage  
University of Detroit Mercy (UDM)

---

Policy # 4008-00  
Effective 07/01/2016

[Vision Benefit Website: www.heritagevisionplans.com](http://www.heritagevisionplans.com)



University of Detroit Mercy (UDM)

# Table of Contents

<b>WELCOME TO HERITAGE VISION PLANS</b>	page 3
<b>SECTION I: YOUR VISION BENEFIT PLAN</b>	
Eligibility & Scope of Coverage	page 4
Table of Benefits	page 5
Preferred Pricing & Services Not Covered	page 6
<b>SECTION II: USING YOUR BENEFIT PLAN</b>	
Using a Heritage Provider	page 7
Claims Appeals	page 8
Unresolved Concerns	page 8
<b>FREQUENTLY ASKED QUESTIONS</b>	page 9 & 10
<b>GLOSSARY OF EYEWEAR TERMS</b>	
Different Types of Prescription Lenses	page 11
Eyeglass Lens Materials	page 12
Eyeglass Lens Coatings and Options	page 13
<b>MEMBER RIGHTS / PRIVACY PRACTICES</b>	page 14
<b>WEBSITE: HOW TO USE</b>	page 15
<b>PROVIDER DIRECTORY</b>	pages 16 - 20

# Introduction

## **WELCOME to Heritage Vision Plans**

We are glad to have you as members of the Heritage Vision Plans family. Heritage is a vision benefit management company that is dedicated to providing exceptional service, world-class quality and an extensive provider network.

Heritage is committed to the quality, reliability and service excellence that have made us successful since 1975. Our goal is to provide you with the best in eye care and service.

We are providing this booklet to enable you and your covered dependents to make the best possible use of your valuable vision care benefit. If you have questions that are not answered here, please call us toll-free:

**800.252.2053**

or e-mail us at:

**[corporate@heritagevisionplans.com](mailto:corporate@heritagevisionplans.com)**.

Cordially,

Heritage Vision Plans, Inc.

**Heritage Vision Plans has developed this guide to help you receive maximum value from your vision benefit. This handbook covers important topics such as: what services are covered, accessing a provider, filing a claim, and member rights and privacy practices.**



## **YOUR VISION BENEFIT PLAN**

### **Eligibility**

Your eligibility and/or your dependent(s) eligibility to participate in this Plan is determined by **University of Detroit Mercy (UDM)**.

### **Scope of Coverage**

Your Scope of Coverage is determined by **University of Detroit Mercy (UDM)**. This section of the Vision Benefit Handbook will explain your plan benefit. The following chart indicates what services are covered, how often each covered service can be used, what you can expect to pay when receiving services from a Heritage provider.



# Heritage Vision Benefits at a Glance

## University of Detroit, Mercy (UDM)

Exam, Lens, or Contacts Benefit Frequency is once every 12 Months (from date of last service)  
 Frame Benefit Frequency is once every 24 Months (from date of last service)

**Policy Number = 4008-00**

COVERED VISION SERVICES	IN-NETWORK COVERAGE
	In-Network Coverage is available to members at over <b>170</b> Participating Provider Locations
<b>Comprehensive Eye Exam For Eyeglasses</b> <small>(Does not apply to Contact Lens Exam)</small>	100% Covered, <b>No Co-Pay</b>
<b>Frames:</b>	
<b>Frames</b>	<b>\$165.00</b> Retail Allowance, <b>No Co-pay</b> <small>(Member pays all retail frame costs over \$165.00)</small>
<b>Lenses (Per Pair): Choice of One</b> <span style="float: right;"><small>Covered Material = Standard Plastic CR-39</small></span>	
<b>Single Vision</b>	100% Covered, <b>No Co-Pay</b>
<b>Bifocal</b>	100% Covered, <b>No Co-Pay</b>
<b>Trifocal</b>	100% Covered, <b>No Co-Pay</b>
<b>Lenticular or Myodisc</b>	100% Covered, <b>No Co-Pay</b>
<b>Lens Options:</b>	
<b>Tint</b> <small>(Therapeutic Rose Tint #1 or #2)</small>	100% Covered, <b>No Co-Pay</b>
<b>Frame Warranty</b> <small>(1 Year U&amp;C manufacturer's warranty)</small>	100% Covered, <b>No Co-Pay</b>

**OR**

<b>Contact Lenses - \$165.00 Allowance towards Exam and Contact Lenses</b>	
<b>Comprehensive Eye Exam<sup>1</sup> For Contact Lenses</b> <small>(Applies to Contact Lens Exam and Fitting)</small>	<b>\$65.00</b> Retail Allowance <small>(Member pays retail contact exam costs over \$65.00)</small>
<b>Contact Lenses<sup>1</sup></b>	<b>\$100.00</b> Retail Allowance <small>(Member pays retail contact lens costs over \$100.00)</small>

<sup>1</sup>You are eligible for lenses OR contact lenses, not both, in any 12 Month Consecutive Period.  
 (Frame Benefit frequency is once every 24 months)



### **Preferred Pricing Discount**

Eligible Heritage Plan Members may receive Preferred Pricing Discounts on optical lens options and upgrades, not covered by the plan, at Participating Provider Locations. These Discounts may not be combined with any other discounts, in-store sales or promotional offers and the discount does not apply to professional (Doctor) services or to contact lenses.

### **Services Not Covered**

Products and services not covered under the plan include:

- Non-prescription lenses
- Two pairs of glasses instead of bifocals
- Lenses and frames furnished under this plan, which are lost or destroyed during the same Plan Year
- Parts or repair of frame not covered under manufacturers' warranty
- Medical or surgical treatment of the eyes
- Drugs or medications
- Corrective vision services, treatments, and materials of an experimental nature
- Services not visually necessary
- Industrial (3mm) safety lenses and safety frames with side shields
- Any services not specified in your Scope of Coverage



### USING YOUR BENEFIT PLAN

#### Using a Heritage Provider

#### Here are the steps to take:

1. Select a doctor from the list of network providers.

The list can be accessed on our Website:

**[www.heritagevisionplans.com](http://www.heritagevisionplans.com)**

or by calling our Customer Service Center toll-free at:

**800.252.2053**

2. Make an appointment with the Doctor of your choice. When calling to make an appointment, identify the name of your Employer or Group and indicate you have coverage through Heritage Vision Plans. The Doctor / Provider will ask for your ID Number and (the Patient's) Date of Birth.
3. The Provider will verify your eligibility and/or the eligibility of dependents.
4. When the examination is complete and you and/or your dependents have been fitted for any necessary glasses or contact lenses, the doctor will explain any additional charges that you may have to pay.
5. The doctor/provider will take care of all the paper- work. **There are no claim forms for you to complete.**

**As a Heritage Vision Plans member, you will maximize benefits and reduce out-of-pocket costs by choosing to visit an In-Network Provider.**



### Claims Appeals

If a claim is denied, in whole or in part, Heritage will notify you of the reasons for denial. Within 60 days after the date of the denial notice, you may make a written request for review of the denial. The request must include any and all supporting documentation. The claim will be reviewed and you will be notified of the decision. Submit claim appeals to:

Heritage Vision Plans, Inc.  
ATTN: Claims Appeal Manager  
One Woodward Avenue, Suite 2020  
Detroit, MI 48226

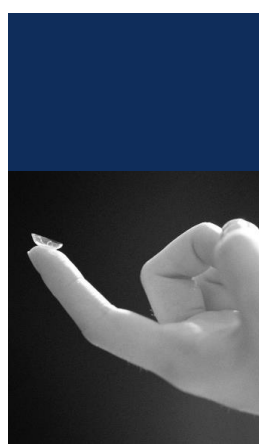
### Unresolved Concerns

If you are not satisfied with Heritage Vision Plans' resolution of any customer service issue you may have, please contact your Human Resources Department representative. After exhausting all avenues to have your concerns satisfactorily addressed, you may contact:

Health Plans Division  
Department of Insurance and Financial Services  
611 W. Ottawa, Third Floor  
P.O. Box 30220  
Lansing, MI 48933







## FREQUENTLY ASKED QUESTIONS

### **Q: Do I need an ID card?**

**A:** You may download an ID Card from our website but it is not required to receive benefits. If you do not have your ID Card available the Provider will need the Member ID#, the patient's Name and Date Of Birth.

### **Q: How can I obtain a list of vision care providers in your network?**

**A:** Heritage Vision Plans offers a provider locator on our Website:

**[www.heritagevisionplans.com](http://www.heritagevisionplans.com)**

Or by calling our toll-free number:

**800.252.2053**

### **Q: Where do I get a claim form to submit for reimbursement?**

**A:** When you visit a Heritage network provider, they will handle all of the paperwork and submit the claim. There are no claim forms for you to complete.

### **Q: Do all optical locations have the same frames to choose from?**

**A:** No. Frame selections will differ by location, but each location offers a wide variety of styles to choose from.

### **Q: Can I use a provider that is not in the attached directory?**

**A:** The most current list of Heritage providers is available online. If the provider is not found in that directory there is no provision in this plan for reimbursement.

**Q: Can I get both contact lenses and glasses?**

**A:** If your plan covers materials, you are eligible to receive contact lenses or glasses, not both, in the same Plan Year as a covered benefit.

**Q: Is Lasik a covered or partially covered benefit?**

**A:** A discount is available for Lasik Refractive Surgery by referral at designated locations under the Group's Scope of Coverage.

Please visit:

**[www.heritagevisionplans.com](http://www.heritagevisionplans.com)**

or call:

**800.252.2053**

to find a Lasik provider near you.

# Glossary of Eyewear Terms

The Eyewear Terms in this Glossary are provided for informational purposes only. They are not meant to reflect actual covered benefits under your vision plan. Please refer to page 3 of this Handbook for your covered benefits.

## DIFFERENT TYPES OF PRESCRIPTION LENSES

Based upon the particular eyesight disorder, different types of corrective lenses are prescribed. As a rule, there are 4 types of prescription lenses: Single Vision, Bifocal, Trifocal, and Progressive.

### Single Vision Lenses

Single Vision lenses have only one viewing area throughout the lens. This corrected area can be for far distance, near distance, or reading.

### Bifocal Lenses

Bifocals (meaning a lens with two points of focus, usually one for distance and one for near) are some of the most commonly prescribed multi-focal lenses.

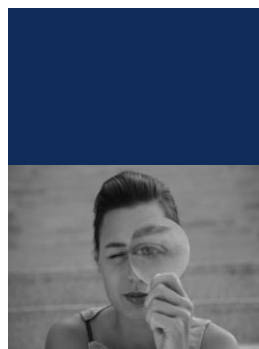
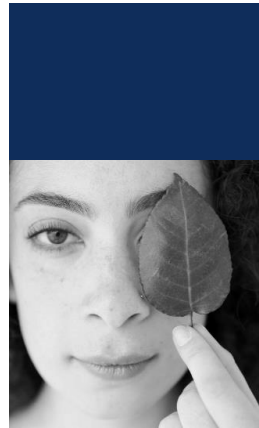
A small portion of the bifocal eyeglass lens is reserved for the near-vision correction. The rest of the lens is usually a distance correction, but may have no correction at all if the wearer has good distance vision.

### Trifocal Lenses

Trifocal lenses are lenses with three points of focus: usually for distance, intermediate and near. Trifocals have an added segment above the bifocal for viewing things in the intermediate zone: about an arm's length away. Computer terminals are typically in the intermediate zone.

### Progressive Lenses

Progressive lenses correct vision for multiple distances without the visible segment lines seen in bifocal or trifocal lenses. Instead they have a graduated section in which the power of the lens progresses smoothly from one prescription to the other, allowing the wearer to see clearly at all distances.



## EYEGLOSS LENS MATERIALS

Choosing the right lens material for your eyeglasses is an important decision, and there are several options.

### Plastic Lenses

Plastic remains the most popular lens material for eyeglasses in the United States, accounting for nearly 50% of all lenses sold. Plastic is generally regarded as the economy choice in lenses. It offers good optical clarity at a lower price point. Due to thickness, it is not typically recommended for higher prescription powers.

### Polycarbonate Lenses

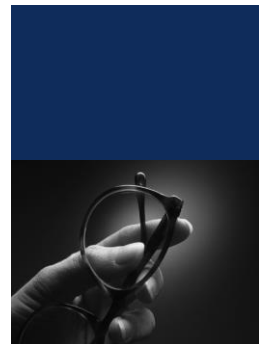
Polycarbonate Lenses are the most durable of all lenses. These lenses are over ten times more impact resistant than regular plastic. They are also one of the lightest, thinnest lens materials used in eyewear (up to 40% thinner and 30% lighter than standard plastic lenses). Polycarbonate remains a good choice if you want the safest and/or lightest lenses possible. It is also an excellent material choice for children.

### Hi Index Lenses

Hi Index lenses are an excellent alternative for patients with higher prescriptions that want the thinnest, most attractive lenses possible. Hi Index lenses range from 20% to 65% thinner than plastic lenses (depending on the refractive index). The higher the refractive index, the thinner the lens (and typically the higher the cost).

### Trivex Lenses

The Trivex lens is a lightweight, impact resistant material much like polycarbonate. It offers the added benefits of lower visual distortion, better optics, and inherent U.V. Protection. Trivex is a great substitute for polycarbonate lenses in prescription sunglasses because Trivex can be easily tinted, whereas polycarbonate cannot.



## EYEGLOSS LENS COATINGS AND OPTIONS

There are many different choices in eyeglass lens coatings and other optical options. These coatings and options can enhance the performance and appearance of your eyeglass lenses.

### Scratch Resistant Coating

The material in plastic lenses is relatively soft and is easily scratched if it is not coated with scratch-resistant coating. This coating, a much harder plastic compound, is applied to the lens surface. The "Scratch Coat" greatly increases the lens' resistance to scratches and abrasions, however it too can be scratched.

### Anti-Reflective or AR Coating

Anti-Reflective Coatings help reduce the reflection on the lenses. When driving (day or night), or using the computer, they reduce the glare and lessen strain on the eyes. What you see is both clearer and sharper. AR Coating also cosmetically enhances the lens, making the lens almost invisible. Your eyes, not the glasses, become the focus of attention.

### Ultra-Violet or UV Coating

UV Coating helps protect the eyes from the harmful damage caused by the sun. This protection helps the eyes tolerate bright sunlight and softens harsh light without making the glasses seem darker. (Note: Both Polycarbonate and Trivex lenses have built-in Ultra-Violet protective properties.)

### Photochromic or Transitions Lenses

Photochromic lenses change from light to dark through changing levels of sunlight. "Transitions" is the most well-known brand in the category of Photochromic lenses. When worn indoors they are virtually clear. When worn outside they change to a dark color.

### Polarized Lenses

Polarized Lenses block out virtually all Ultra-Violet Rays. These lenses help to eliminate haze and glare, while increasing visibility.



# Member Rights and Responsibilities / Privacy Practices

If you would like to request a copy of our **Notice of Privacy Practices**, please contact us at:

## **Plan Administrator**

Heritage Vision Plans, Inc.  
One Woodward Avenue, Suite 2020  
Detroit, MI 48226  
Phone: (800) 252-2053  
Fax: (313) 863-1189  
Email: [corporate@heritagevisionplans.com](mailto:corporate@heritagevisionplans.com)

## **Member Rights and Responsibilities**

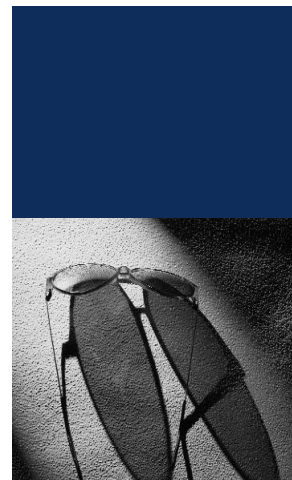
- Members may be required to cooperate in the subrogation and coordination of benefits.
- Benefits may not be assigned.
- Members shall notify their employer in case of address change.
- Members shall have the right to inspect and review their own medical records.

## **Provider Information**

Information about any participating provider is available from Heritage Vision Plans at the above listed address.

## **Non-Discrimination**

Heritage Vision Plans does not discriminate on the basis of race, color, creed, national origin, residence within the approved service area, lawful occupation, sex, handicap, or marital status.



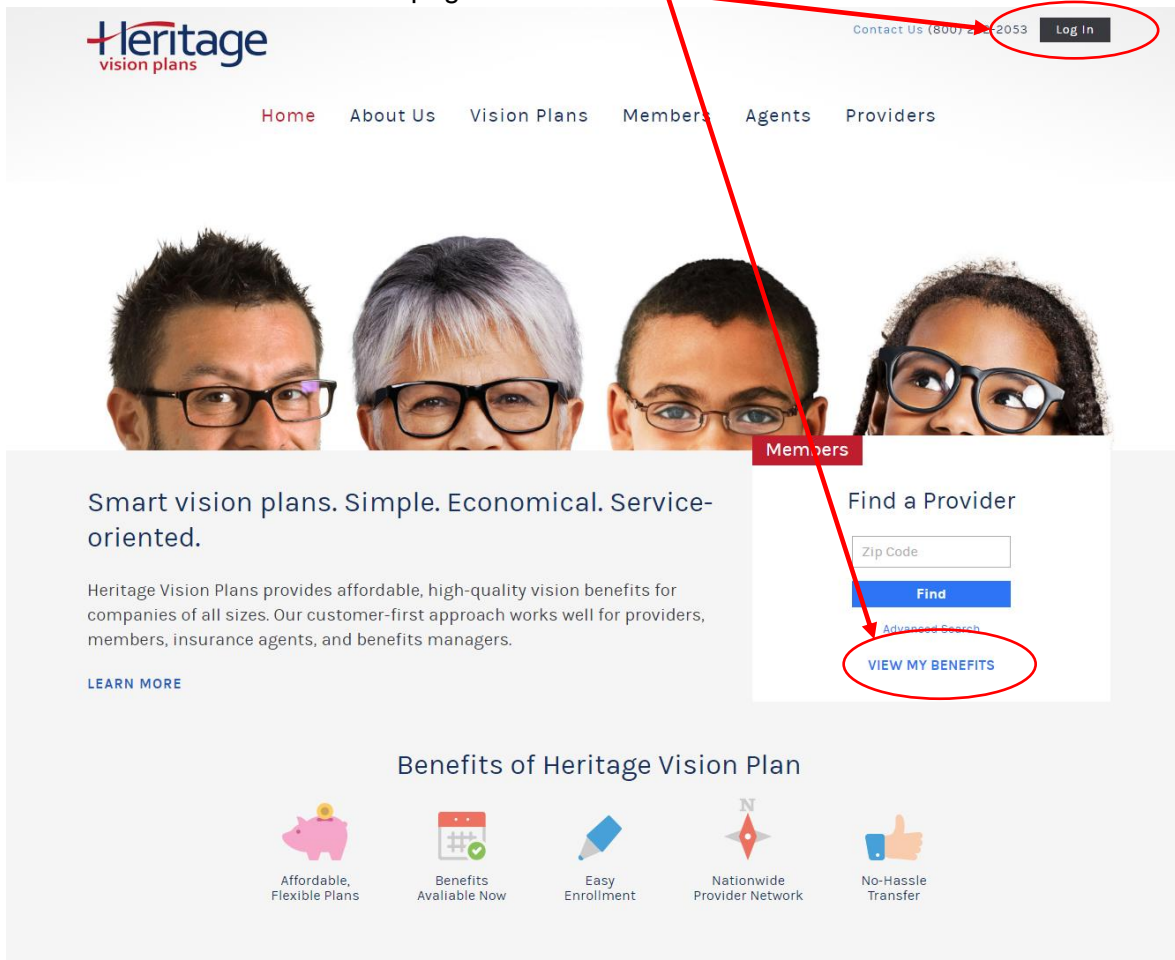
# Heritage Vision Plans Members: How to Login

## Step 1: Go to the Heritage Vision Plans Website

The Heritage Vision Plans website is [www.HeritageVisionPlans.com](http://www.HeritageVisionPlans.com)

## Step 2: Select Member Login

Click the "Member Login" or "View My Benefits" button in the upper right corner of the web page.



[www.heritagevisionplans.com](http://www.heritagevisionplans.com) (Snapshot of Home Page)

## Step 3: Register / Login

At the secure "Member Web Portal", please select the "Register Now" button and proceed to enter your subscriber ID (found on your ID card) or the last 4 digits of your SSN and Date of Birth. After registering, you may "Login" to access your benefit and eligibility information, claims history and status, print a replacement ID card and utilize the "Find a Provider" Search Engine.

(Snapshot of login form on Member Portal)

# Provider Directory

Participating Provider information is subject to change without notice. Please call Providers, listed in this Directory, to verify their continued participation in the Heritage Provider Network, prior to scheduling your appointment or receiving services.

The Heritage Vision Plans Website ([www.heritagevisionplans.com](http://www.heritagevisionplans.com)) or the Customer Service Center will always be your source for the most up-to-date Participating Providers.

## Allegan

**RX OPTICAL**  
1281 WEST M-89  
PLAINWELL, MI 49080

## Barry

**RX OPTICAL**  
803 W. STATE STREET  
HASTINGS, MI 49058

## Berrien

**RX OPTICAL**  
2008 WASHINGTON  
ST. JOSEPH, MI 49085

**RX OPTICAL**  
1421 S. 11TH STREET  
NILES, MI 49120

**RX OPTICAL**  
1761 S. M-139  
BENTON HARBOR, MI 49023

## Branch

**RX OPTICAL**  
755 E. CHICAGO  
COLDWATER, MI 49036

## Calhoun

**RX OPTICAL**  
65 E. COLUMBIA  
BATTLE CREEK, MI 49015

## Eaton

**RX OPTICAL**  
1315 LANSING ROAD SUITE B  
CHARLOTTE, MI 48813

**RX OPTICAL**  
6001 W. SAGINAW HIGHWAY  
LANSING, MI 48917

## Elkhart

**RX OPTICAL**  
2224 CASSOPOLIS STREET  
ELKHART, IN 46516

## Genesee

**RIVERFRONT EYECARE (FLINT)**  
4325 MILLER ROAD  
FLINT, MI 48507

## Hillsdale

**RX OPTICAL**  
855 OLDS STREET  
JONESVILLE, MI 49250

## Ingham

**PEARLE VISION**  
5224 S. CEDAR STREET  
LANSING, MI 48911

**RX OPTICAL**  
2285 W. GRAND RIVER  
OKEMOS, MI 48864

## Ionia

**RX OPTICAL**  
3125 S. STATE STREET  
IONIA, MI 48846

## Iosco

**FRASER OPTICAL**  
211 N. STATE STREET  
OSCODA, MI 48750

## Jackson

**RX OPTICAL**  
1617 N. WEST AVENUE  
JACKSON, MI 49202

**RX OPTICAL**  
3132 E. MICHIGAN AVENUE  
JACKSON, MI 49202

## Kalamazoo

**RX OPTICAL**  
3013 OAKLAND DRIVE  
KALAMAZOO, MI 49008

**RX OPTICAL**  
125 S. KALAMAZOO MALL  
KALAMAZOO, MI 49007

**RX OPTICAL**  
5349 WEST MAIN STREET  
KALAMAZOO, MI 49009

**RX OPTICAL**  
6123 S. WESTNEDGE  
PORTAGE, MI 49002

**RX OPTICAL**  
1700 S. PARK STREET  
KALAMAZOO, MI 49001

**RX OPTICAL**  
601 JOHN STREET SUITE M-261  
BRONSON HOSPITAL  
KALAMAZOO, MI 49007

**RX OPTICAL**  
5465 GULL ROAD  
KALAMAZOO, MI 49004

## Kent

**RX OPTICAL**  
4555 WILSON AVENUE SW  
GRANDVILLE, MI 49418

**RX OPTICAL**  
1717 28TH STREET S.W.  
WYOMING, MI 49509

**RX OPTICAL**  
3576 ALPINE AVENUE N.W.  
WALKER, MI 49504

**RX OPTICAL**  
4482 LAKE MICHIGAN DRIVE  
WALKER, MI 49534



**RX OPTICAL**  
507 EAST DIVISION  
ROCKFORD, MI 49341

**RX OPTICAL**  
2350 44TH STREET SE  
KENTWOOD, MI 49508

**RX OPTICAL**  
5429 NORTHLAND DRIVE N.E.  
GRAND RAPIDS, MI 49525

**RX OPTICAL**  
6749 CASCADE ROAD SUITE A  
GRAND RAPIDS, MI 49546

**RX OPTICAL**  
1888 BRETON ROAD, SE  
BRETON VILLAGE SHOPPING CENTER  
GRAND RAPIDS, MI 49505

**RX OPTICAL**  
6143 KALAMAZOO AVENUE  
GRAND RAPIDS, MI 49508

**RX OPTICAL**  
1844 BRETON ROAD SE  
GRAND RAPIDS, MI 49506

**RX OPTICAL**  
4022 PLAINFIELD AVENUE, NE  
GRAND RAPIDS, MI 49525

**RX OPTICAL**  
3083 28TH STREET S.E.  
GRAND RAPIDS, MI 49512

**RX OPTICAL**  
2000 EAST BELTLINE NE  
GRAND RAPIDS, MI 49525

## Livingston

**EYE CARE ONE**  
2674 EAST GRAND RIVER AVENUE  
(LIVINGSTON COUNTY VISION CENTER)  
HOWELL, MI 48843

**INFOCUS OPTICAL**  
205 W. GRAND RIVER  
BRIGHTON, MI 48116

## Macomb

**ADVANCED VISION CENTERS**  
5714 15 MILE ROAD  
STERLING HEIGHTS, MI 48310

**ADVANCED VISION CENTERS**  
64641 VAN DYKE ROAD  
WASHINGTON, MI 48095

**ADVANCED VISION CENTERS**  
32090 23 MILE ROAD  
DR. FRED C. LICHOTA O.D.  
NEW BALTIMORE, MI 48047

**BLACK & WHITE LOOK OPTICAL**  
18023 E. 8 MILE ROAD  
EASTPOINTE, MI 48021

**CLEAR SIGHT OPTICAL**  
26768 DEQUINDRE ROAD  
WARREN, MI 48091

**DOLAN OPTICAL**  
48856 VAN DYKE AVENUE  
SHELBY TOWNSHIP, MI 48317

**DOLAN OPTICAL**  
21527 HARPER AVENUE  
ST. CLAIR SHORES, MI 48080

**FORTNEY EYECARE ASSOCIATES**  
3824 THIRTEEN MILE ROAD  
WARREN, MI 48092

**FRASER OPTICAL**  
32925 GROESBECK HIGHWAY  
FRASER, MI 48026

**FRASER OPTICAL**  
51026 VAN DYKE AVENUE  
SHELBY TOWNSHIP, MI 48316

**FRASER OPTICAL**  
3602 15 MILE ROAD  
STERLING HEIGHTS, MI 48310

**FRASER OPTICAL**  
71150 N. VAN DYKE ROAD  
ROMEO, MI 48065

**FRASER OPTICAL**  
66751 GRATIOT  
RICHMOND, MI 48062

**HENRY FORD OPTIMEYES**  
2025 25 MILE ROAD  
SHELBY TOWNSHIP, MI 48316

**HENRY FORD OPTIMEYES**  
27903 23 MILE ROAD  
CHESTERFIELD, MI 48051

**HENRY FORD OPTIMEYES**  
44987 SCHOENHERR ROAD  
HENRY FORD MEDICAL CENTER  
STERLING HEIGHTS, MI 48313

**HENRY FORD OPTIMEYES**  
33100 GRATIOT AVENUE  
CLINTON TOWNSHIP, MI 48035

**METRO VISION II**  
39087 GARFIELD ROAD  
CLINTON TOWNSHIP, MI 48038

**MILLER OPTICAL, INC.**  
43560 VAN DYKE AVENUE  
STERLING HEIGHTS, MI 48314

**MILLER OPTICAL, INC.**  
67960 VAN DYKE ROAD  
ROMEO, MI 48065

**NORMANDY OPTICAL**  
47093 HAYES ROAD  
SHELBY TOWNSHIP, MI 48315

**NORMANDY OPTICAL**  
24307 HARPER AVENUE  
ST. CLAIR SHORES, MI 48080

**NORMANDY OPTICAL**  
36838 RYAN ROAD  
STERLING HEIGHTS, MI 48310

**OXFORD OPTICAL CO.**  
20919 GRATIOT AVENUE  
EASTPOINTE, MI 48021

**SHELBY MACOMB VISION ASSOCIATES**  
11445 15 MILE ROAD  
STERLING HEIGHTS, MI 48312

**SHELBY MACOMB VISION ASSOCIATES**  
50505 SCHOENHERR ROAD, SUITE 110  
DR. LEAH BRUDER O.D.  
SHELBY TOWNSHIP, MI 48315

**ST. CLAIR EYE OF SHELBY**  
48873 HAYES ROAD  
SHELBY TOWNSHIP, MI 48315

**THE LENS BOUTIQUE**  
42524 HAYES ROAD SUITE 300  
CLINTON TOWNSHIP, MI 48038

**TOTAL VISION**  
35445 23 MILE ROAD  
NEW BALTIMORE, MI 48047

**W. FRASER VIPOND CORPORATION  
(EXAM ONLY)**  
20919 GRATIOT AVENUE  
EASTPOINTE, MI 48021

**W. OPTICAL ROSEVILLE**  
31503 GRATIOT AVE  
ROSEVILLE, MI 48066

**W. OPTICAL SHELBY TOWNSHIP**  
13909 HALL ROAD  
SHELBY TOWNSHIP, MI 48315

## Monroe

**HENRY FORD OPTIMEYES**  
504 N. TELEGRAPH ROAD  
MONROE, MI 48162

## Muskegon

**RX OPTICAL**  
1720 E. STERNBERG ROAD  
MUSKEGON, MI 49444

**RX OPTICAL**  
2159 E. APPLE AVENUE  
MUSKEGON, MI 49442

## Oakland

### **20/20 VISION OF ROCHESTER INC.**

3110 WALTON BOULEVARD  
ROCHESTER HILLS, MI 48309

### **ACCENT EYECARE**

2498 S. ROCHESTER ROAD  
ROCHESTER HILLS, MI 48307

### **ADVANCE EYE CARE**

23077 GREENFIELD ROAD STE 144  
SOUTHFIELD, MI 48075

### **ALLISON EYE CARE**

6770 DIXIE HIGHWAY #203  
CLARKSTON, MI 48346

### **AUBURN HILLS EYE CLINIC**

4151 BALDWIN ROAD  
AUBURN HILLS, MI 48326

### **BENJAMIN H. STEIN O.D.**

29911 NORTHWESTERN HWY.  
SOUTHFIELD, MI 48034

### **BLACK & WHITE LOOK OPTICAL**

15675 W. TEN MILE ROAD  
SOUTHFIELD, MI 48075

### **BURMAN OPHTHALMOLOGY**

43996 WOODWARD AVENUE, SUITE 101  
BLOOMFIELD HILLS, MI 48302

### **CLARKSTON VISION**

7196 N. MAIN STREET  
CLARKSTON, MI 48346

### **DIRECT OPTICAL SUPERSTORE**

29321 ORCHARD LAKE ROAD  
FARMINGTON HILLS, MI 48334

### **EMAD NAKKASH M.D. PC**

22039 JOHN R. ROAD EYE CLINIC  
HAZEL PARK, MI 48030

### **EMAD NAKKASH M.D. PC**

3080 JOHN R ROAD EYE CLINIC  
ROCHESTER HILLS, MI 48307

### **EYE SPY EYE CARE**

33308 GRAND RIVER AVENUE  
FARMINGTON, MI 48336

### **FASHION EYEGLASS INC.**

32756 WOODWARD AVENUE  
ROYAL OAK, MI 48073

### **FOCUS OPTICAL**

2046 AUBURN ROAD  
ROCHESTER HILLS, MI 48309

### **FORTNEY EYECARE ASSOCIATES**

3021 WALTON BOULEVARD  
AUBURN HILLS, MI 48326

### **GNB OPTICAL**

43996 WOODWARD AVENUE, SUITE 101  
INSIDE BURMAN OPHTHALMOLOGY  
BLOOMFIELD HILLS, MI 48302

### **GOLDEN GATE OPTICAL**

2943 E. BIG BEAVER ROAD  
TROY, MI 48083

### **HENRY FORD OPTIMEYES**

38487 W. 10 MILE ROAD  
FARMINGTON HILLS, MI 48335

### **HENRY FORD OPTIMEYES**

684 S. LAPEER ROAD  
LAKE ORION, MI 48362

### **HENRY FORD OPTIMEYES**

516 HIGHLAND AVENUE  
MILFORD, MI 48381

### **HENRY FORD OPTIMEYES**

29350 SOUTHFIELD ROAD  
SOUTHFIELD, MI 48076

### **HENRY FORD OPTIMEYES**

6530 FARMINGTON ROAD  
WEST BLOOMFIELD, MI 48322

### **HENRY FORD OPTIMEYES**

735 JOHN R ROAD  
TROY, MI 48083

### **HENRY FORD OPTIMEYES**

29351 JOHN R ROAD  
MADISON HEIGHTS, MI 48071

### **HENRY FORD OPTIMEYES**

3271 UNION LAKE ROAD  
COMMERCE TOWNSHIP, MI 48382

### **HOUSE OF OPTICAL**

329 W. 14 MILE ROAD  
CLAWSON, MI 48017

### **KRESGE EYE INSTITUTE**

26400 W 12 MILE RD STE 60  
UNIVERSITY PHYSICIAN GROUP  
SOUTHFIELD, MI 48034

### **LAKE ORION VISION, PC**

81 INDIANWOOD ROAD  
LAKE ORION, MI 48362

### **LYNN OPTICAL ASSOCIATES**

22 N. TELEGRAPH ROAD  
PONTIAC, MI 48341

### **MEDICAL VILLAGE OPTICAL DESIGNS**

31815 SOUTHFIELD ROAD #12  
BEVERLY HILLS, MI 48025

### **MICHIGAN EYECARE INSTITUTE**

29877 TELEGRAPH ROAD, SUITE 100  
SOUTHFIELD, MI 48034

### **NORMANDY OPTICAL**

137 S. LIVERNOIS  
(FORMERLY FOX OPTICAL)  
ROCHESTER HILLS, MI 48307

### **OAKLAND VISION SERVICES**

519 N. PONTIAC TRAIL  
WALLED LAKE, MI 48390

### **OAKLAND VISION SERVICES**

608 N. LAFAYETTE STREET  
SOUTH LYON, MI 48178

### **PEARLE VISION**

32987 WOODWARD AVENUE OPTIQUE  
ROYAL OAK, MI 48073

### **PEARLE VISION**

4470 HIGHLAND ROAD  
WATERFORD, MI 48328

### **RX OPTICAL**

27604 MIDDLEBELT ROAD  
FARMINGTON HILLS, MI 48334

### **SOBEL EYE CARE**

27641 SOUTHFIELD ROAD  
LATHRUP VILLAGE, MI 48076

### **VISION PLUS**

22371 PONTIAC TRAIL  
SOUTH LYON, MI 48178

### **WSUPG OPHTHALMOLOGY (EXAM ONLY)**

1455 S. LAPEER ROAD, SUITE 110  
LAKE ORION, MI 48360

### **WSUPG OPHTHALMOLOGY (EXAM ONLY)**

1560 E. MAPLE ROAD, STE 200  
TROY, MI 48083

## Ottawa

### **RX OPTICAL**

12659 RILEY STREET  
HOLLAND, MI 49424

### **RX OPTICAL**

1125 S. BEACON ROAD  
GRAND HAVEN, MI 49417

### **RX OPTICAL**

381 BALDWIN  
JENISON, MI 49428

### **RX OPTICAL**

1148 S. WASHINGTON  
HOLLAND, MI 49423

## Saginaw

### **RIVERFRONT EYECARE (SAGINAW)**

3200 S. CABARET TRAIL  
SAGINAW, MI 48603

## Saint Clair

### DISTINCTIVE EYEWEAR

1280 S. 9TH STREET  
ST. CLAIR, MI 48079

### HENRY FORD OPTIMEYES

4355 24TH AVENUE, SUITE 5  
FORT GRATIOT, MI 48059

### ST. CLAIR EYE

1921 FRED MOORE HIGHWAY  
ST. CLAIR, MI 48079

### ST. CLAIR EYE

3443 COUNTY LINE  
CASCO, MI 48064

### TOTAL VISION CENTER

1100 MICHIGAN AVENUE  
MARYSVILLE, MI 48040

## Saint Joseph

### RX OPTICAL

500 S. CENTERVILLE  
STURGIS, MI 49091

### RX OPTICAL

111 S US HWY 131  
THREE RIVERS, MI 49093

## Sanilac

### FAMILY EYE CARE OF LEXINGTON

5590 MAIN STREET, SUITE 1  
LEXINGTON, MI 48450

### FAMILY EYE CARE OF SANDUSKY

454 W. SANILAC ROAD  
SANDUSKY, MI 48471

## Washtenaw

### CHELSEA OPTOMETRY

1171 S. MAIN STREET, SUITE 2  
CHELSEA, MI 48118

### FORTNEY EYECARE ASSOCIATES

2 NORTH HURON STREET  
YPSILANTI, MI 48197

### RX OPTICAL

867 W. EISENHOWER PARKWAY  
ANN ARBOR, MI 48103

### YPSILANTI VISION

1769 WASHTENAW AVENUE  
GARY M. MOSS O.D.  
YPSILANTI, MI 48197

## Wayne

### BAYNE / VILLAGE OPTICAL INC.

16841 KERCHEVAL PLACE  
GROSSE POINTE, MI 48230

### BELLEVILLE VISION CENTER

10798 BELLEVILLE ROAD  
BELLEVILLE, MI 48111

### BLACK & WHITE LOOK OPTICAL

12871 E. JEFFERSON SUITE A  
DETROIT, MI 48215

### BURMAN & ZUCKERBROD

#### OPHTHALMOLOGY

7992 N. WAYNE ROAD  
WESTLAND, MI 48185

### BURMAN OPHTHALMOLOGY

14400 W. MCNICHOLS ROAD  
DETROIT, MI 48235

### DESIGNS FOR VISION DOWNRIVER

19216 FORT STREET  
RIVERVIEW, MI 48193

### DIRECT OPTICAL SUPERSTORE

41840 FORD ROAD  
CANTON, MI 48187

### ELITE EYECARE CENTERS

29316 FORD ROAD  
GARDEN CITY, MI 48135

### ELITE EYECARE CENTERS

44750 FORD ROAD  
CANTON, MI 48187

### EYE WORKS OPTICAL

20845 MACK AVE.  
(INSIDE GROSSE POINTE EYE CTR.)  
GROSSE POINTE WOODS, MI 48236

### FORTNEY EYECARE ASSOCIATES

23469 MICHIGAN AVENUE  
DEARBORN, MI 48124

### FORTNEY EYECARE ASSOCIATES

34752 WARREN ROAD  
WESTLAND, MI 48185

### FORTNEY EYECARE ASSOCIATES

37673 FIVE MILE ROAD  
LIVONIA, MI 48154

### GNB OPTICAL

14400 W. MCNICHOLS ROAD  
INSIDE BURMAN OPHTHALMOLOGY  
DETROIT, MI 48235

### GNB OPTICAL

7992 N. WAYNE ROAD  
INSIDE BURMAN OPHTHALMOLOGY  
WESTLAND, MI 48185

### GRAHAMS OPTIQUE BOUTIQUE

20100 OUTER DRIVE  
DEARBORN, MI 48124

### HEALTH CENTER OPTICAL

4201 SAINT ANTOINE STREET  
DETROIT, MI 48201

### HENRY FORD OPTIMEYES

2799 W. GRAND BOULEVARD, 1ST FLOOR  
HENRY FORD HOSPITAL, DETROIT, MI  
48202

### HENRY FORD OPTIMEYES

15401 E. JEFFERSON, 1ST FLOOR HENRY  
FORD MEDICAL CENTER  
GROSSE POINTE PARK, MI 48230

### HENRY FORD OPTIMEYES

400 RENAISSANCE CENTER, SUITE 1402  
DETROIT, MI 48243

### HENRY FORD OPTIMEYES

35184 CENTRAL CITY PARKWAY  
WESTLAND, MI 48185

### HENRY FORD OPTIMEYES

22395 EUREKA ROAD  
TAYLOR SUPER VISION CENTER  
TAYLOR, MI 48180

### HENRY FORD OPTIMEYES

5500 AUTO CLUB DRIVE  
DEARBORN SUPER VISION CENTER  
DEARBORN, MI 48126

### HERITAGE OPTICAL CENTER

19010 LIVERNOIS AVENUE  
DETROIT, MI 48221

### HERITAGE OPTICAL CENTER

2678 E. JEFFERSON AVENUE  
DETROIT, MI 48207

### HERITAGE OPTICAL CENTER

87 MONROE STREET  
DETROIT, MI 48226

### KRESGE EYE INSTITUTE

4717 SAINT ANTOINE STREET  
UNIVERSITY PHYSICIAN GROUP  
DETROIT, MI 48201

### KRESGE EYE INSTITUTE & OPTICAL

4700 SCHAEFER ROAD, SUITE 165  
DEARBORN, MI 48126

### KRESGE WELL EYE CARE CENTER & OPTICAL SHOP

6071 W. OUTER DRIVE, SUITE 205  
SINAI GRACE PROFESSIONAL BUILDING  
DETROIT, MI 48235

### LESNICK OPTICAL

13350 FORT STREET  
SOUTHGATE, MI 48195

### LESNICK OPTICAL

13350 FORT STREET  
SOUTHGATE, MI 48195

**M.Y. EYE CARE**

15001 MICHIGAN AVENUE  
DEARBORN, MI 48126

**M.Y. EYE CARE**

20440 HAGGERTY ROAD  
NORTHVILLE, MI 48167

**METROPOLITAN VISION ASSOCIATES**

25350 W. WARREN STREET  
DEARBORN HEIGHTS, MI 48127

**MICHIGAN EYE CLINIC**

12123 CONANT STREET  
ALI H. FAKIH O.D.  
HAMTRAMCK, MI 48212

**MICHIGAN EYECARE INSTITUTE**

14555 LEVAN, SUITE E101  
LIVONIA, MI 48154

**MIDWESTERN VISION CENTER**

5050 SCHAEFER ROAD  
DEARBORN, MI 48126

**MURRAY A. FELDMAN O.D.**

4851 MICHIGAN AVENUE  
DETROIT, MI 48210

**OAKLAND EYEWEAR**

15055 PLAZA SOUTH DRIVE  
TAYLOR, MI 48180

**OPTICAL WORLD**

15336 GRAND RIVER AVENUE  
DETROIT, MI 48227

**PEARLE VISION**

37339 SIX MILE ROAD  
LIVONIA, MI 48152

**PEARLE VISION (FRANCHISE)**

43271 FORD ROAD  
CANTON, MI 48187

**PERSPECTIVE EYECARE**

11824 BELLEVILLE ROAD  
BELLEVILLE, MI 48111

**PHYSICIAN EYE CARE ASSOCIATES**

6255 INKSTER RD. SUITE 303  
GARDEN CITY, MI 48135

**POINTE VISION CARE PC**

19637 MACK AVENUE  
GROSSE POINTE, MI 48236

**REDFORD OPTICAL**

23320 FORD ROAD  
DEARBORN HEIGHTS, MI 48127

**ROSEDALE EYE CARE**

19550 GRAND RIVER AVENUE  
DETROIT, MI 48223

**ROYAL OPTICS**

34393 PLYMOUTH ROAD  
LIVONIA, MI 48150

**RX OPTICAL**

23055 OUTER DRIVE  
ALLEN PARK, MI 48101

**RX OPTICAL**

29474 WEST SEVEN MILE RD.  
LIVONIA, MI 48152

**RX OPTICAL**

23110 ALLEN ROAD  
WOODHAVEN, MI 48183

**RX OPTICAL**

15204 EUREKA ROAD  
SOUTHGATE, MI 48195

**RX OPTICAL**

44429 ANN ARBOR ROAD  
WEST PLYMOUTH, MI 48170

**SHARPER VISION**

71 GARFIELD STREET, SUITE 180  
DETROIT, MI 48201

**THE EYE INSTITUTE OF  
SOUTHEASTERN MICHIGAN**

10531 W. JEFFERSON AVE.  
RIVER ROUGE, MI 48218

**VISION WITHOUT LIMITS**

42461 FORD ROAD  
CANTON, MI 48187

**VISIONPRO EYECARE**

7237 N. CANTON CENTER ROAD  
CANTON, MI 48187

**WYANDOTTE OPTICAL**

3101 BIDDLE AVENUE  
WYANDOTTE, MI 48192



Member Services Center  
One Woodward Avenue, Suite 2020  
Detroit, MI 48226  
800-252-2053  
[www.heritagevisionplans.com](http://www.heritagevisionplans.com)  
email: [corporate@heritagevisionplans.com](mailto:corporate@heritagevisionplans.com)